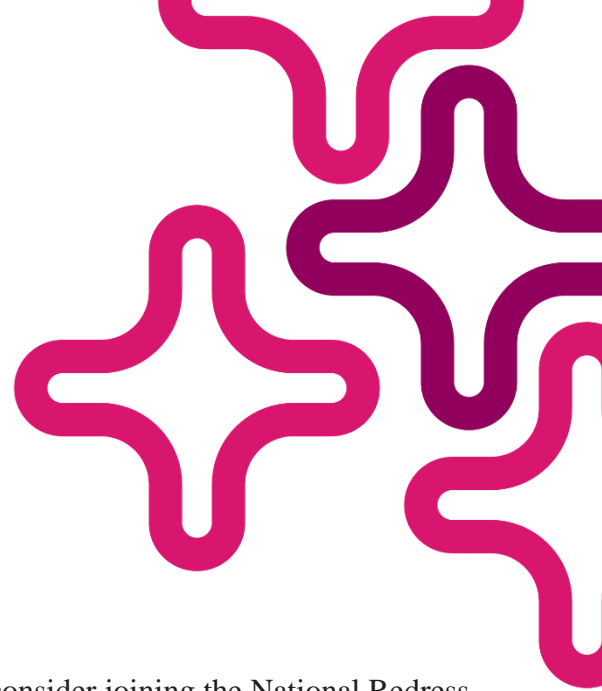




**GIRLS'
BRIGADE**
New South Wales



NATIONAL REDRESS SCHEME RESPONSE

In early 2020, The Girls' Brigade Australia encouraged each state to consider joining the National Redress Scheme due to the lack of resources available at a national level.

The Girls' Brigade NSW Board has investigated joining the Scheme, however as both The Girls' Brigade Australia and The Girls' Brigade NSW have not been named in the Royal Commission report into Institutionalised Responses to Child Sexual Abuse, the decision has been made by The Girls' Brigade NSW Board to not join the National Redress Scheme at this stage.

Whilst The Girls' Brigade NSW are not joining the National Redress Scheme at this time, we are able to reassess our need to join in the future due to the following clause:

" Where the Scheme receives an application naming a previously unnamed non-participating institution after the 30 June 2020 deadline, the Scheme will contact the institution and the institution will be given six months to join. Should that institution fail to join the Scheme within the six months, the institution will be publicly identified by the Scheme in accordance with Scheme legislation and jurisdictions may apply other appropriate sanctions. This provides certainty for survivors who were victims of abuse in an institution that has not yet been named, that they can lodge their application at a later date, whilst ensuring organisations cannot drag out the process of joining, which causes yet more harm to survivors."

(Department of Social Services, 2020)

Should the need arise to join the Scheme in the future, appropriate action will be taken.

Regardless of whether we join the scheme or not, The Girls' Brigade NSW is committed to keeping members in our organisation safe.

If you would like to discuss any of the items raised in this letter, please email gbnsw@girlsbrigade.org.au

Dated June 2020.

REFERENCES

Department of Social Services. (2020, June 02). *Institutions that have not yet joined the Scheme*. Retrieved from National Redress Scheme: <https://www.nationalredress.gov.au/institutions/institutions-have-not-yet-joined>